



Ekip-X: Yon engredyan kle pou bati lidèchip kolektif

Pwofesè Deborah Ancona





Se yon monn nouvo

Konpetisyon chen anraje—y ap envante règ yo pandan n ap jwe jwèt la

Koneksyon youn ak lòt—sa k pase an Chin gen konsekans ki rive jis Etazini

Konpleksite—menm moun ki ekspè yo mal pou konnen

Siviv—oswa nou dakò kolabore ansanm oswa nou tout kankannen

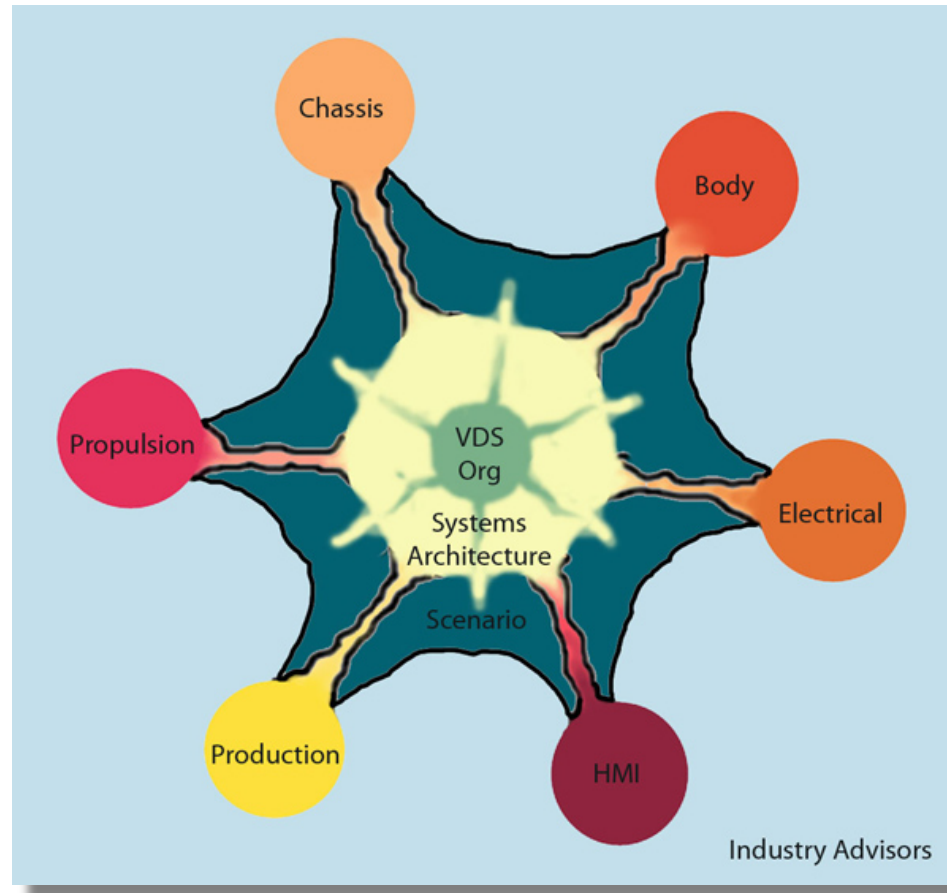
Nouvo Chan Oganizasyon—ak antrepriz ki fèk parèt nan jwèt la tou (egzanp: “Vehicle Design Summit”)



MIT LEADERSHIP CENTER



Kòman pou w fè konpetisyon kont modèl VDS sa a, oswa kolabore avè l, oswa chanje pou vin tankou l?

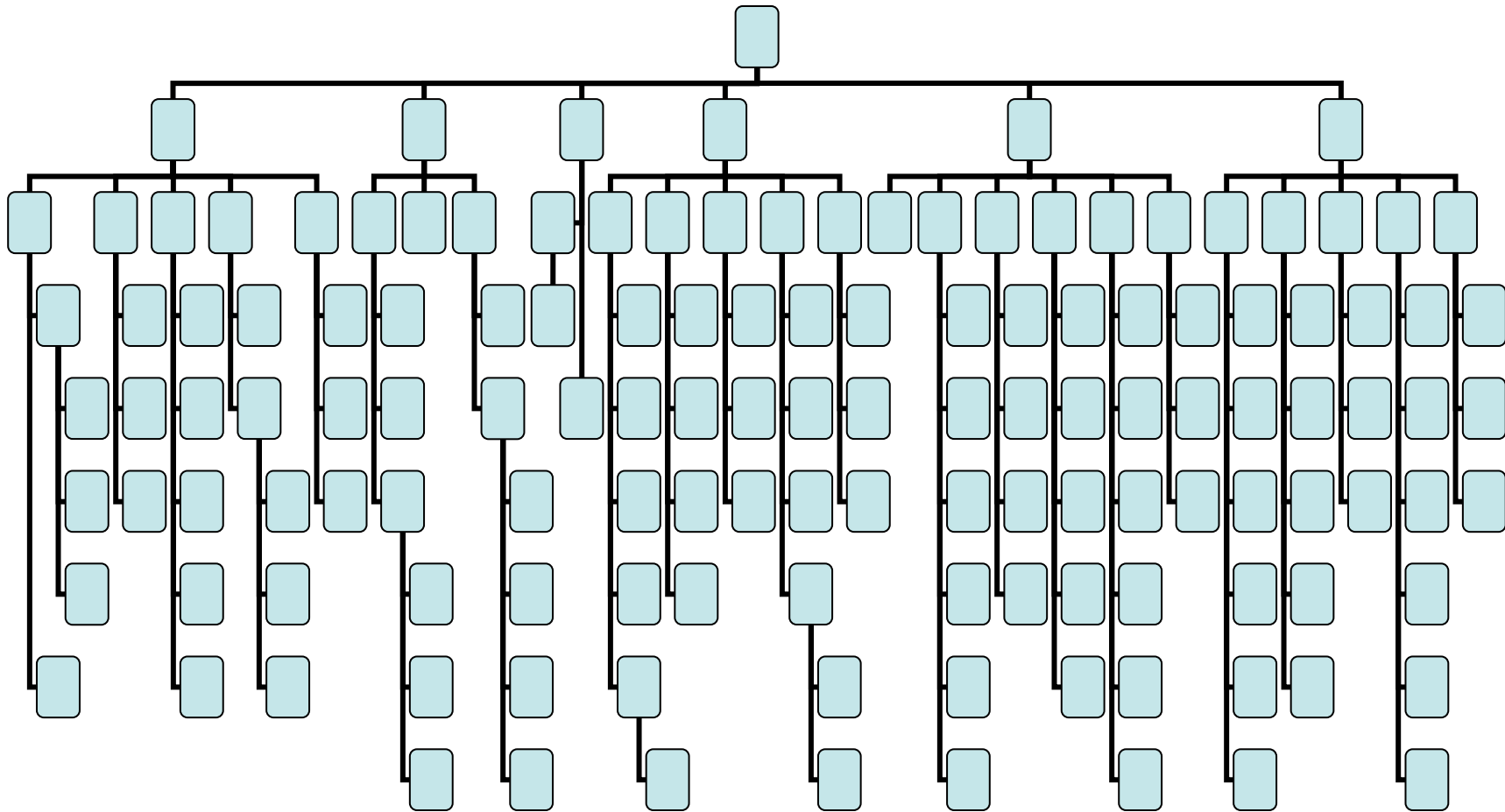


MIT LEADERSHIP CENTER





Kòman pou w fè modèl sa a mache nan yon monn ki plat?



MIT LEADERSHIP CENTER





Ki jan w ap rive “montre yon elefan danse”?

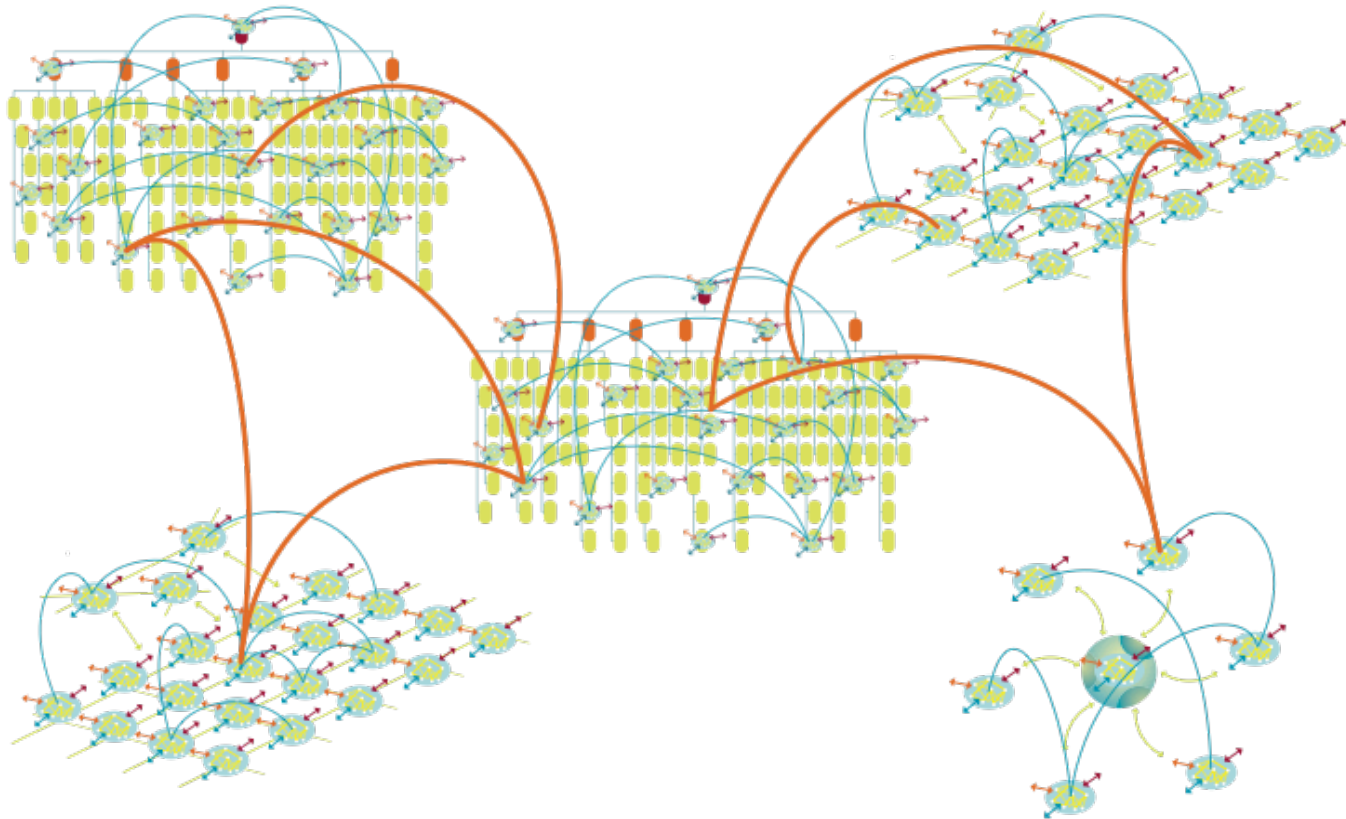


MIT LEADERSHIP CENTER





Ki jan pou ou pataje lidèchip ant divès òganizasyon



MIT Leadership Center



MIT LEADERSHIP CENTER





Ekip-X... motè pou chanjman... nwayo pou lidèchip kolektif



MIT LEADERSHIP CENTER





**Kisa OU-MENM ou panse
ki ka esplike ki jan
yon ekip ka bay pèfòmans ki solid?**



MIT LEADERSHIP CENTER





Ekip tradisyonèl yo...

Santre sou pwòp tèt pa yo...

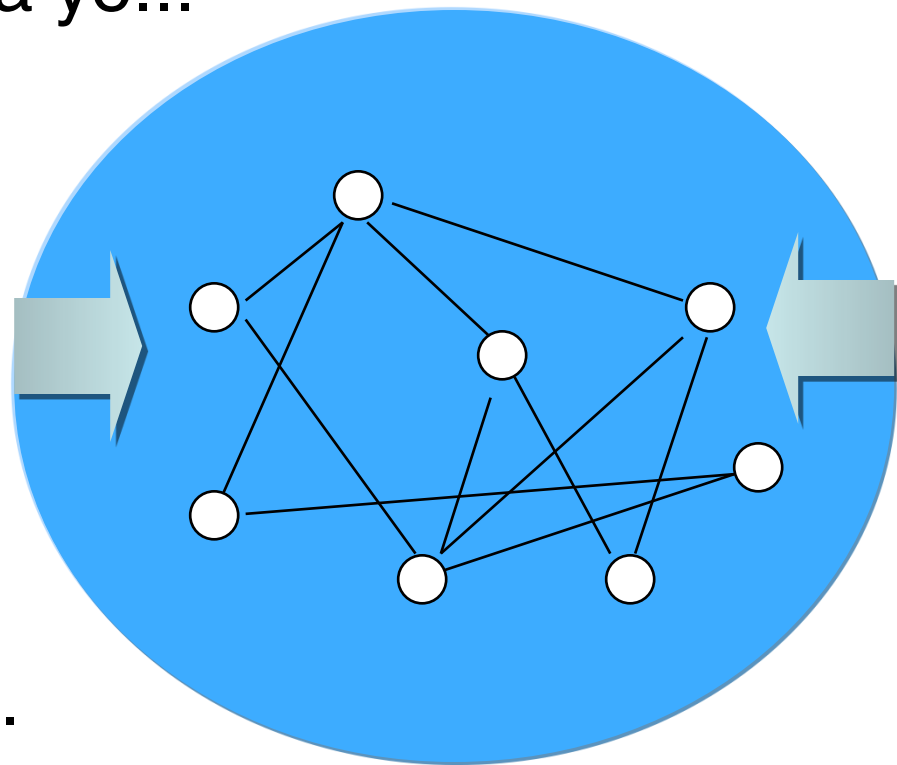
sou misyon pa yo...

sou pwoblèm pa yo...

sou manm pa yo...

sou wòl pa yo...

sou operasyon pa yo...

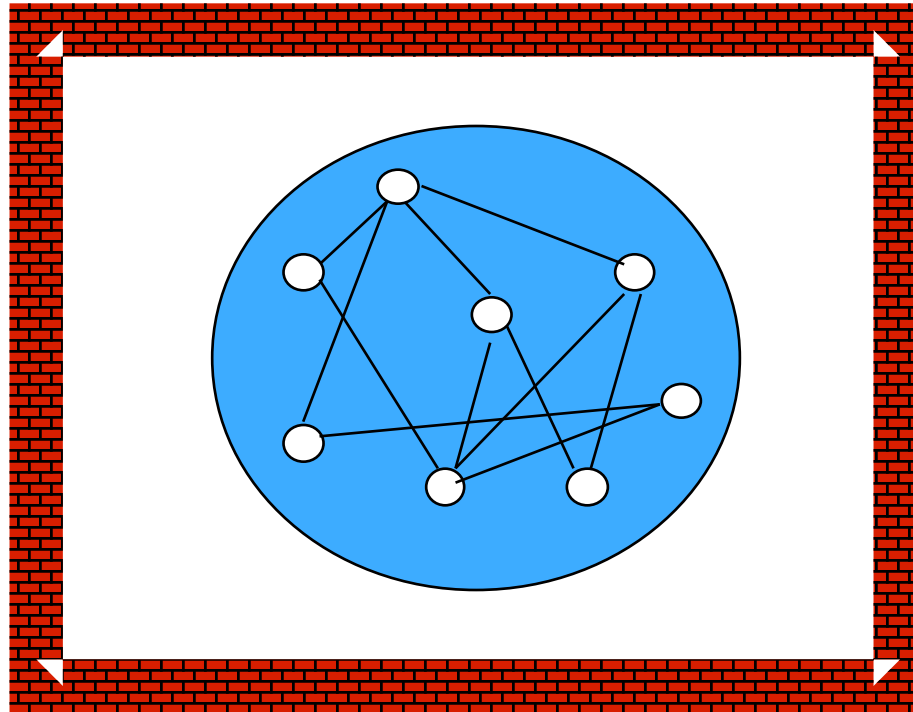


MIT LEADERSHIP CENTER





Ekip sa yo ap echwe nan 21èm syèk la



MIT LEADERSHIP CENTER





Ekip-X

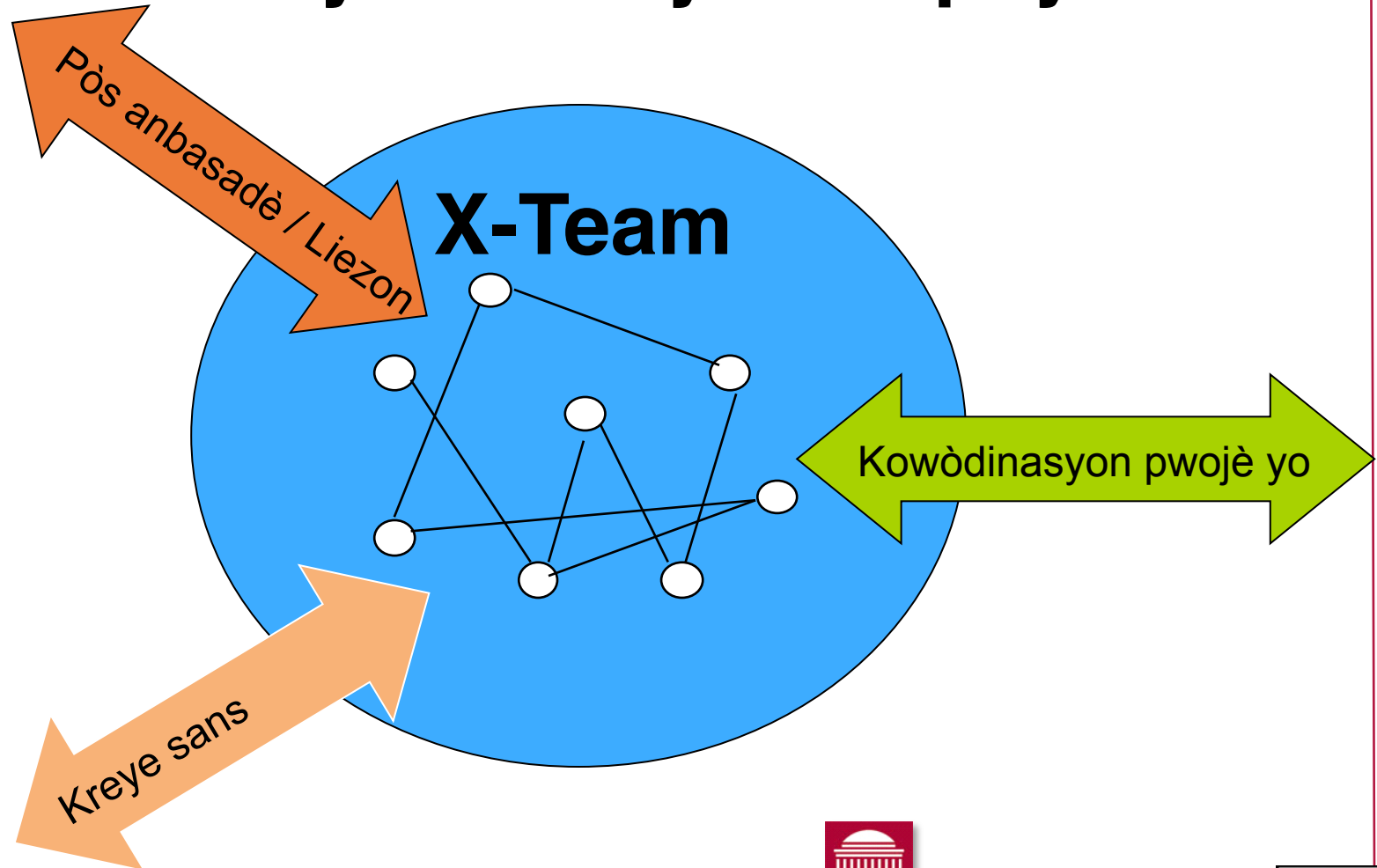
Gade video sou
konpayi IDEO



MIT LEADERSHIP CENTER

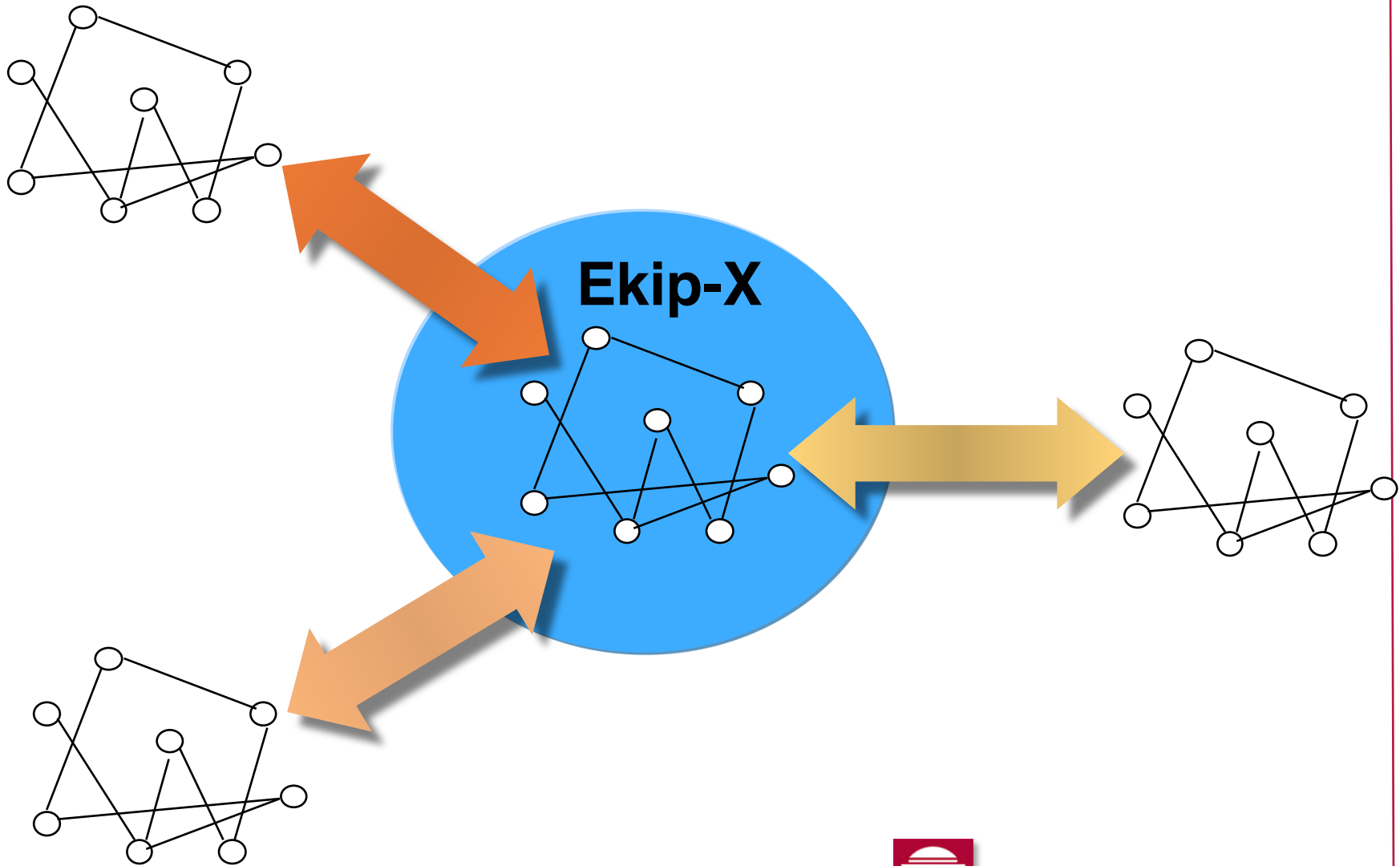


Ki sa yon Ekip-X ye? Aksyon ki ale an deyò fwontyè konpayi a...





Ekip-X... Rezo ekstèn yo



MIT LEADERSHIP CENTER





Ann ekip:

Brase lide pou w wè kòman ou ta ka sèvi ak aktivite sa yo nan ekip ou, nan ministè w la, epi nan divès ministè alafwa.

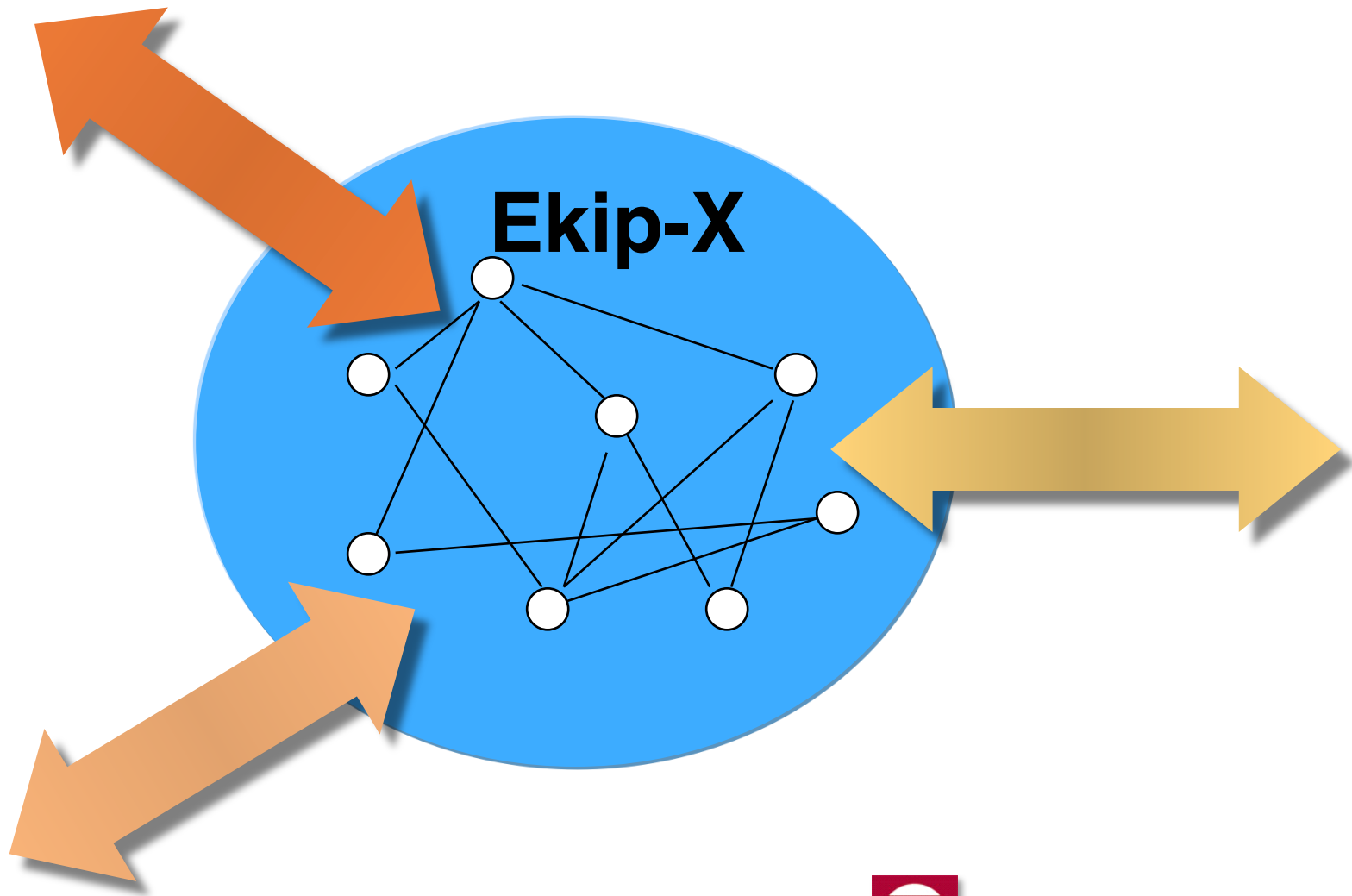
- Plase antèn pou kreye sans
- Pòs anbasadè / Liezon
- Kowòdinasyon pwojè yo



MIT LEADERSHIP CENTER



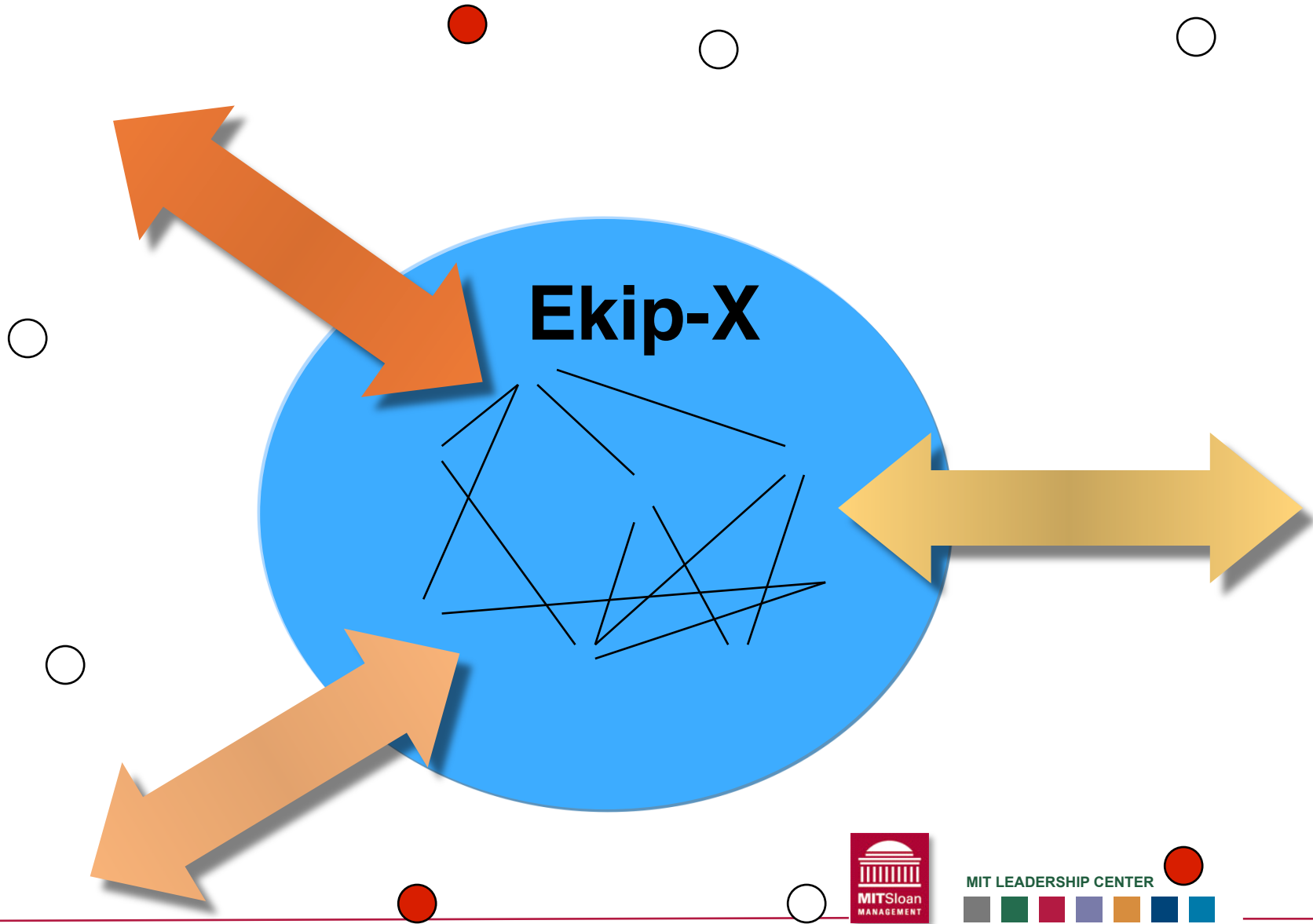
Ekip-X... Li fleksib e li adapte fasil



MIT LEADERSHIP CENTER



Ekip-X... Li fleksib e li adapte Fasil



MIT LEADERSHIP CENTER





Fleksiblite—Anndan bay deyò sipò

IKE: Idantite, Kilti epi Egzekisyon

- Chak moun konnen sa lòt yo konnen—Fòk nou itilize talan kòm levye
- Bati yon anviwonman ki san danje epi pa kite lespri nou nan kalòj—Fòk nou kreye nouvo kilti
- Òganize nou pou n jwenn siksè:
travay, objektif, modèl, wòl, zouti



MIT LEADERSHIP CENTER





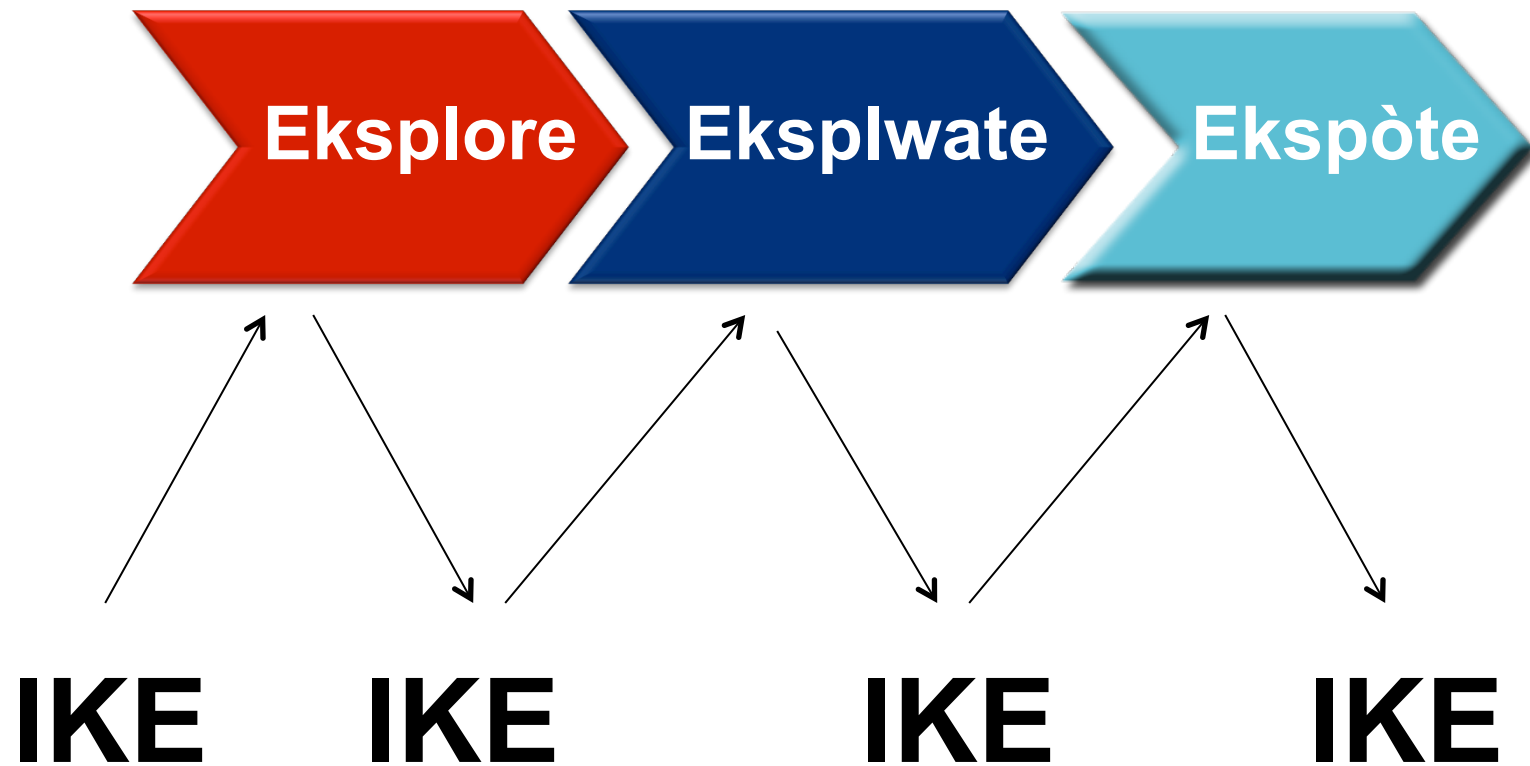
Ekip-X...Faz Fleksiblite



MIT LEADERSHIP CENTER



Ekip-X...Faz Fleksiblite

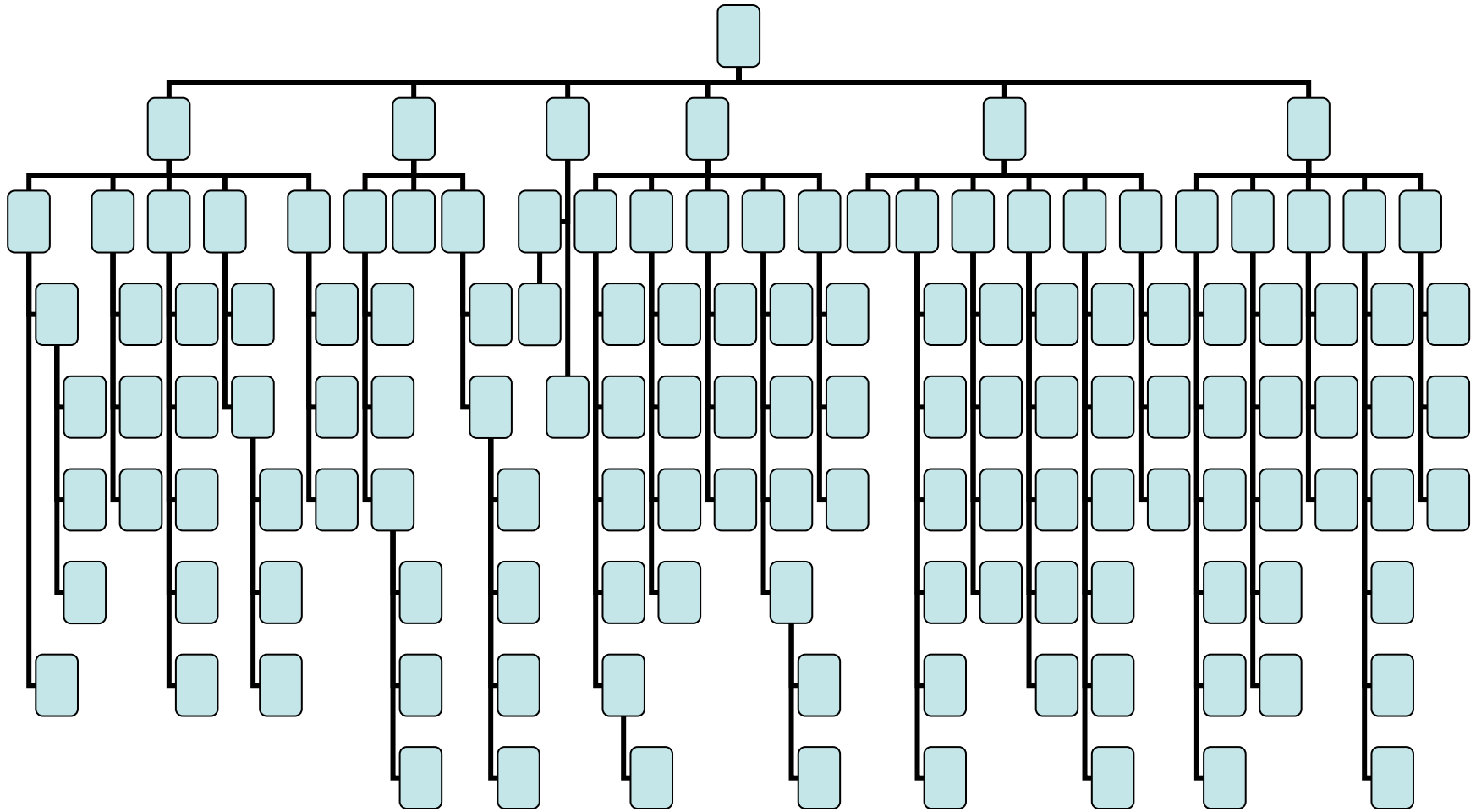


MIT LEADERSHIP CENTER





Kòman pou w fè modèl sa a mache nan yon monn ki plat?

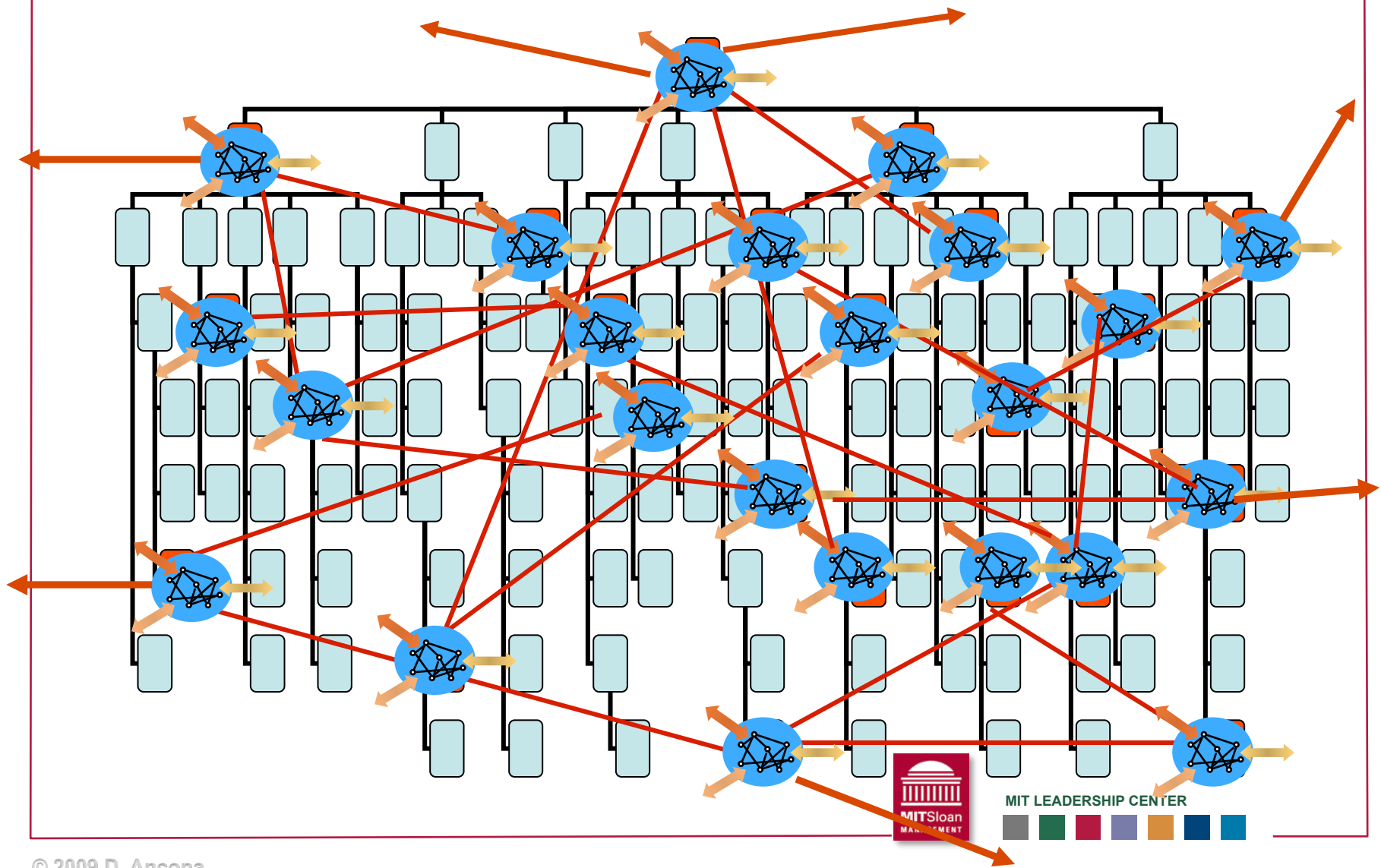


MIT LEADERSHIP CENTER



Ekip-X:

Yon enfrastrikti pou inovasyon

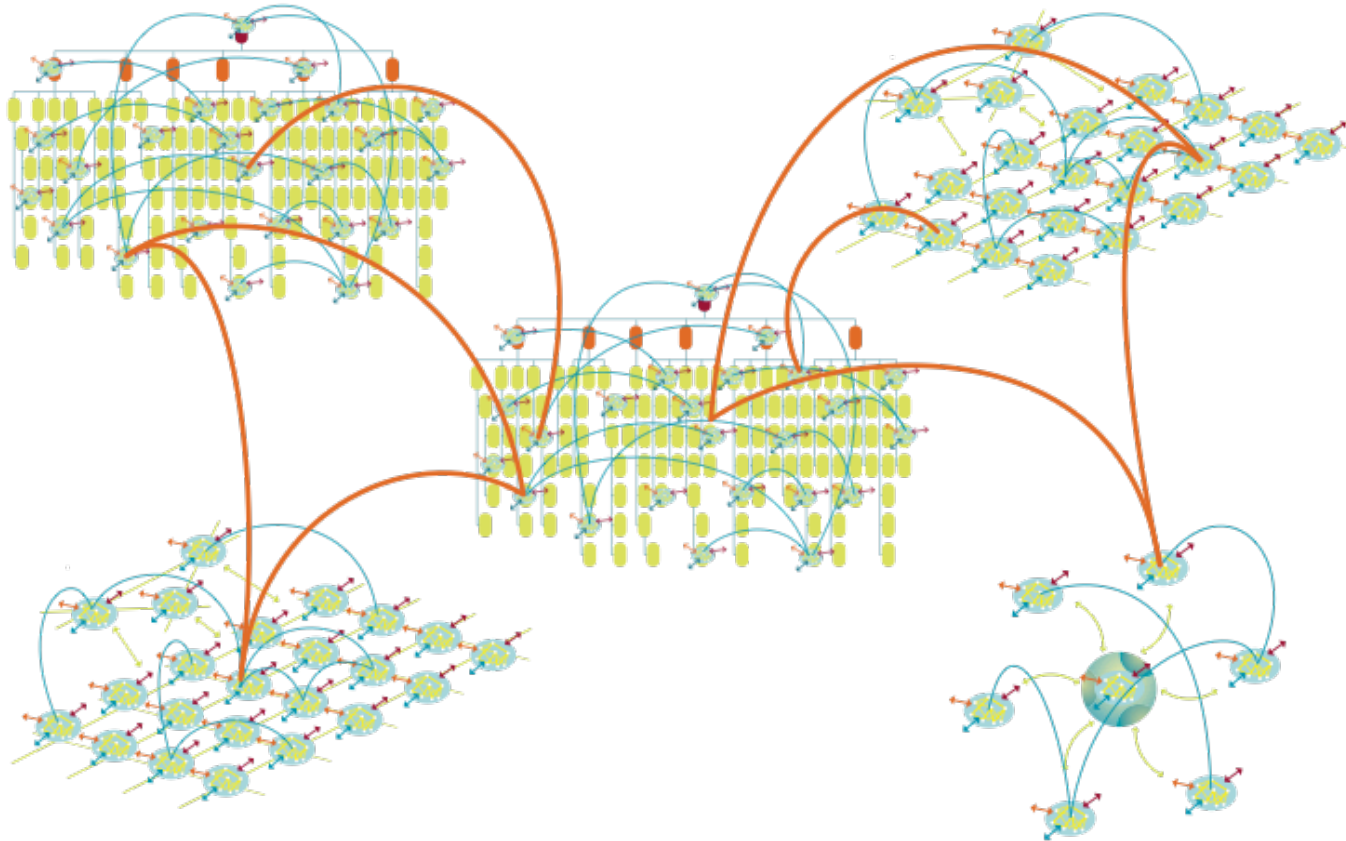


MIT LEADERSHIP CENTER





Ki jan pou ou pataje lidèchip ant divès òganizasyon



MIT Leadership Center



MIT LEADERSHIP CENTER





Ann ekip:

Brase lide pou wè kòman ou ta ka sèvi ak kèk lide Ekip-X sa yo nan ekip ou, nan ministè w, epi nan divès ministè alafwa.

Ki sa ou ta ka fè yon fason diferan?



MIT LEADERSHIP CENTER





Ekip-X:

- Santre sou sa k ap fèt deyò
- Makonnen ak bonjan estrateji
- Inovasyon epi egzekisyon
- Enfrastrikti pou inovasyon



Ekip-X...

